

# Renovators Ltd.

A quarterly newsletter building industry knowledge.

Fall/Winter, 2006

## Gain space with cleverly designed kitchen islands

Kitchen islands are among the most popular trends in kitchen remodeling projects. They offer versatility in style and function. People often add them as part of an overall refacing project. You can choose to blend the island with your countertops and cabinetry or choose a granite island with wood or laminate surfaces.

Kitchen islands are available in a variety of colors, sizes and materials to suit any home décor. Choose contemporary, country homestyle or summer kitchen styles. Look through catalogs and home decorating magazines to see the options and unique designs available. Make notes of what you like and features you need in your island.

### **Adding Kitchen Islands**

You can add an island easily, if you have enough room. Look at several islands and get the exact dimensions of the ones you like best. Measure your kitchen; you will need to leave between forty-two and forty-eight inches of space around the entire island. You want to make sure you can easily open your refrigerator, oven and dishwasher.

To get the feel for how much space an island will take up, try a little experiment. Find a piece of furniture in your home that is about the size and dimensions of your island. Move this furniture into the kitchen and place it where you want the island to be located. Keep it there for about a week or so to help you decide if you can live with it. If it's too large, look for a model with smaller dimensions. Experiment with a few different sizes to find the one that feels right.

There are no rules governing the height. It's a matter of preference and function. You need to decide what the area will be used for to determine how high to make the counter. If you will be cooking, preparing food or using a built in sink, make the height even with your other kitchen cabinets. Choose a lower height for seating with tables, or a higher counter for stool type seating.

### **Utilizing kitchen islands the clever way**

Consider how you will use the island. Do you need more storage space? You have several choices for cooking, preparing food, clean up and storage.

- For storage space, islands can be made to match existing kitchen cabinets and counter tops.
- Cabinets, drawers or a



combination of both can be used to maximize storage space.

- Adding bookshelves to the end creates a great place to display your cookbook collection. Add a few collectibles to the shelves for a more personalized look.
- Wine lovers sometimes choose to add a wine rack in place of shelves.

*“Clever kitchens”*

continued on page 3

Look through catalogs and **home decorating magazines** to see the options and **unique designs** available.

### **INSIDE THIS ISSUE**

**PAGE 2**  
**Renovators Ltd. Showcase**

**PAGE 3**  
**In the News**  
**Kudos to You**

**PAGE 4**  
**Holiday Greetings!**

## Making a seamless transition from old to new

The client approached Renovators Ltd. with the desire to add a great room and second floor master bathroom to their two-story brick home.

Renovators Ltd. recommended the removal of an existing breezeway porch between the home and two-car garage which would then make room for the great room and bathroom addition. The removal of the small breezeway would also allow for the welcomed expansion of the small existing dinette into the addition space.

As design progressed, we were able to create a dedicated mudroom entry with coat closet. This new entry into the home is conveniently located between the existing kitchen and new great room. As a result of building the addition directly behind the kitchen, we were able to open up the entire dinette and kitchen

area by removing what had once been the exterior wall. This created a spacious and well-lit area that allowed us to incorporate an island into the kitchen.

The transformation from kitchen to the great room was highlighted by a cozy dinette with courtyard view and access to a stamped concrete patio via a sliding patio door with sidelights.

The great room incorporated a gas fireplace with a traditional painted mantle surround with marble accent tile along the perimeter of the firebox opening. The homeowner installed a flat panel television above the fireplace mantle for easy viewing from the main seating area, dinette, and kitchen as well.

Red oak hardwood flooring was installed throughout the new great room, dinette, and revised kitchen to closely match the existing hardwood floors. Tile flooring was installed diagonally in the new mudroom to add durability as well as a bold contrast to the hardwood flooring in the great room and kitchen. Further kitchen improvements included new

solid-surface countertops on existing cabinetry, a new stainless steel sink and faucet, and additional recessed lighting in the ceiling.

The exterior of the first floor addition, facing the street, was integrated into the existing structure by using reclaimed cream city brick which was removed from the back of the home in preparation for the project. The new entry into the addition was highlighted by custom wood columns on either side of the door, as found on the front façade of the home. Shutters were located along the sides of the new great room windows and matched to existing shutters to further integrate the new structure into the existing one.

The second floor master bathroom addition was located immediately above the first floor great room addition and was accessed via an existing doorway from the master suite to an existing second floor porch. The master bathroom was designed around an elegant cherry "his and her" vanity arrangement with granite top, oil rubbed bronze faucets, and

“Further kitchen improvements included new **solid-surface countertops** on existing cabinetry, a new **stainless steel sink** and faucet, and additional **recessed lighting** in the ceiling.”



## “Clever kitchens”

continued from cover

- Cooking space can be built into the top of an island, saving space above the oven. This is a great option for kitchens with a double oven.
- Consider how you will use the top when choosing counters. A built-in butcher block or cutting surface is great if you spend a lot of time preparing food. This helps you avoid cuts and nicks on the surface of your counter.
- If you like to bake, consider marble. You can prepare and roll out your dough right on the surface without sticking.
- An island can be used for seating area. Adjust the height lower for table type seating or raise it higher for barstools. Allow about two feet of space per person for comfort.
- Sinks and appliances, such as dishwashers and trash compactors can be added to an island in place of cabinets.
- Have an electrical outlet added to one side. This is great for cooking with small appliances like electric mixers or blenders.

### Portable Islands

A portable island gives you additional countertop area when you



need it. These are a great alternative for smaller kitchens. You can purchase one unassembled and put it together yourself easily. Portables usually are on wheels, allowing you to move it out of the way when you need extra space.

You can purchase a moving island with a cabinet for storage space, or get one that looks like a taller table. A built-in cutting board surface gives you additional space for cutting vegetables and preparing food. The most common materials used for the top are steel, tile and wood.

---

Guy Morris is author and designer of the <http://www.kitchen-cabinets-tips.com> internetsite. Guy is helping people finding the best solutions on kitchen islands <http://www.kitchen-cabinets-tips.com/kitchen-islands.html> ) and designs.

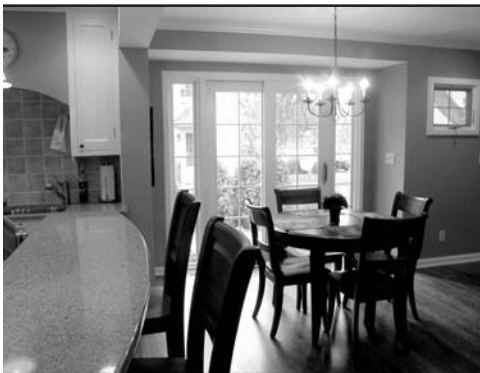
flanking casement windows. A chamfered ceiling added additional architectural interest to the room.

Closet space just inside the bathroom entry accommodates overflow storage from the master bedroom, and a large linen closet is located directly across from the twin vanity for additional storage space.

Decorative tile and a listello feature strip, as well as a frameless glass shower door accent the large three by six-foot shower with a built-in seat. Ceramic tile laid diagonally on the floor contrasts with other bathroom elements and compliments the tile on the shower walls.

All base, crown and case moldings were faithfully reproduced and painted to match the details of the existing millwork elsewhere in the home.

Factory painted Hardiplank siding was applied to the new addition's walls, with the garage being resided as well to match the new exterior. New soffits, fascia and gutters were finished in aluminum matching the existing trim, and the new roof was installed with closely-matching asphalt shingles to visually blend the new addition with the original home.



## In the News

**Peter Wells** has joined Renovators Ltd. as a design/sales associate. A member of the National Kitchen and Bath Association, his strong design skills and sales experience provides Renovators Ltd. with client acquisition, design solution, and project support. Passionate about creating well thought out spaces for people to live in, Peter's background in art and 2- and 3-dimensional design allows for "outside the box" solutions from small baths to large kitchens and additions.

\*\*\*

**Caitlin Wefler** has joined Renovators Ltd. as a clerical/design assistant. She feels this is a great opportunity to experience the business first hand, and will be providing the design team and office staff with support. Caitlin is currently attending ITT Technical Institute to receive an Associates degree in Computer Aided Drafting and Design, and plans to graduate in 2006.

## KUDOS to you!

We take pride in the quality work and attention to detail we provide for you. Nothing shows us that you value this more than when you share our name with your family and friends. We want to take this opportunity to express our appreciation.

- Thanks to **Bill Pickering** for referring **Mike** and **Jessica Byrnes**, as well as **Randy** and **Ingrid Pavlick**
- Thanks to **Tom Feiza** for referring **Brian** and **Linda Terry**
- Thanks to **Arlo** and **Nancy Coplan** for referring **Diane** and **George Edward**
- Thanks to **Mike Morse** and **Beth Foy** for referring **Margarette Andera** and **David Murphy**.
- Thanks to **Mike Aliota** for referring **Debra Rash**.
- Thanks to **Bill** and **Sandy Scallon** (senior) for referring their son **Bill Scallon**.
- Thanks to **Eric** and **Ann Bachar** for referring **Scott** and **Stephanie Niederjohn**.



This newsletter is a forum to learn about new techniques, industry standards, methods and individual stories. If you have ideas, articles, photos, questions or a subject you would like to see published, for consideration please contact us at our office: RENOVATORS LTD. • 14260 W Greenfield Ave, Suite 203, Brookfield, WI 53005 • Phone: (262) 782-7860 • Email: [info@renovatorstld.com](mailto:info@renovatorstld.com) • [www.renovatorstld.com](http://www.renovatorstld.com)

*A quarterly newsletter to help  
inform our customers and build  
awareness and knowledge in the  
remodeling industry.  
We appreciate your business!*

---

14260 W Greenfield Ave, Suite 203  
Brookfield, WI 53005  
Phone (262) 782-7860  
Fax: (262) 782-7865  
[www.renovatorstld.com](http://www.renovatorstld.com)

**RENOVATORS**  
— LTD —  
*Design / Build / Remodel*



PRSR1 STD  
U.S. POSTAGE  
**PAID**  
MILWAUKEE, WI  
PERMIT NO. 1275